

# GRADWEEK

THE BEST WEEK OF YOUR LIFE!

Class of 2024  
Fall Edition

## WHAT'S INCLUDED?

### TRIP PACKAGES

#### INCLUDE:

- Roundtrip Airfare
- Hotel Accommodations (up to 5 nights)
- On-site Airport/Hotel Transfers
- GradWeek Wristband (good for exclusive discounts at restaurants and tours)
- On-site Welcome Orientation
- Hotel Taxes, Bellman and Maid Gratuities
- 24-Hour Adult Destination Staff (not chaperones)
- Travel Protection Insurance (for coverage details and restrictions please review the insurance flyer)
- Online Payments, 24/7 Account and Trip Status

*Note: Hotel occupancy fees are listed per person (p.p.).*

### BONUS INCLUSIONS

- 🌟 Downtown City Tour
- 🌟 GradWeek Beach Party

### CONTACT US!

Phone: (800) 448-4444

Website: [www.gradweek.com](http://www.gradweek.com)



#### ALL-INCLUSIVE CATEGORY: BREEZES RESORT

*Student Package prices are based on: 6 days/5 nights and quadruple occupancy (4 per room, 2 per bed) unless noted otherwise.*

*Prices do not include: Departure Tax (\$175), Hotel Incidentals or Hotel Occupancy Fees (for less than 4). Triple Occ. + \$110 p.p., Double Occ. + \$330 p.p., and Single Occ. + \$900.*

Atlanta	\$1,619
Boston	\$1,619
Charlotte/Raleigh	\$1,619
Chicago	\$1,609
Denver	\$1,709
Houston	\$1,649
Jacksonville	\$1,609
Little Rock	\$1,639
Los Angeles	\$1,739
Memphis	\$1,639
Miami	\$1,449
Nashville	\$1,639
New Orleans	\$1,649
New York City	\$1,639
Orlando/Tampa	\$1,449
Philadelphia	\$1,659
Phoenix	\$1,739
Sacramento	\$1,749
San Diego	\$1,759
San Fran./Oakland/San Jose	\$1,739
Seattle	\$1,749

# BAHAMAS

## #GRADWEEK 2024

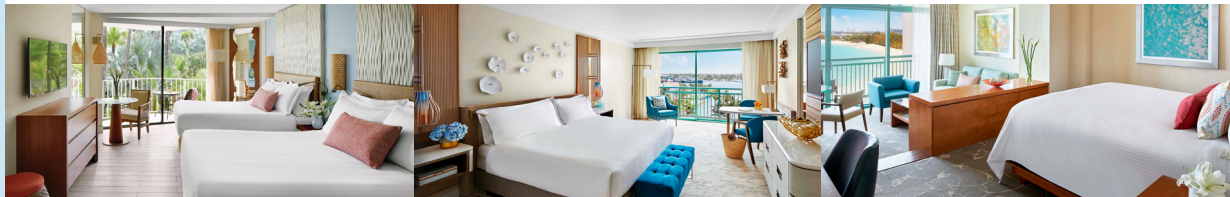


#### PARENT ALL-INCLUSIVE CATEGORY: RIU PALACE PARADISE ISLAND

*Parent Package prices are based on: 6 days/5 nights and double occupancy (2 per room, with either 1 king or 2 doubles) unless noted otherwise.*

*Prices do not include: Departure Tax (\$175), Hotel Incidentals or Hotel Occupancy Fees (for less than 2). Single Occ. + \$500 (Triple Occ. Discount \$50 p.p.).*

Atlanta	\$2,199
Boston	\$2,199
Charlotte/Raleigh	\$2,199
Chicago	\$2,189
Denver	\$2,289
Houston	\$2,229
Jacksonville	\$2,189
Little Rock	\$2,219
Los Angeles	\$2,319
Memphis	\$2,219
Miami	\$2,029
Nashville	\$2,219
New Orleans	\$2,229
New York City	\$2,219
Orlando/Tampa	\$2,029
Philadelphia	\$2,239
Phoenix	\$2,319
Sacramento	\$2,329
San Diego	\$2,339
San Fran./Oakland/San Jose	\$2,319
Seattle	\$2,329



#### DELUXE CATEGORY: ATLANTIS CORAL TOWER

*Student Package prices are based on: 5 days/4 nights and quadruple occupancy (4 per room, 2 per bed) unless noted otherwise.*

*Prices do not include: Departure Tax (\$175), Hotel Incidentals or Hotel Occupancy Fees (for less than 4). Triple Occ. + \$80 p.p., Double Occ. + \$160 p.p., and Single Occ. + \$410.*

Little Rock (5d/4n)	\$1,499
Memphis (5d/4n)	\$1,499
Nashville (5d/4n)	\$1,499
New Orleans (5d/4n)	\$1,479

#### DELUXE CATEGORY: ATLANTIS ROYAL TOWER

*Student Package prices are based on: 5 days/4 nights and quadruple occupancy (4 per room, 2 per bed) unless noted otherwise.*

*Prices do not include: Departure Tax (\$175), Hotel Incidentals or Hotel Occupancy Fees (for less than 4). Triple Occ. + \$110 p.p., Double Occ. + \$320 p.p., and Single Occ. + \$650.*

Little Rock (5d/4n)	\$1,569
Memphis (5d/4n)	\$1,569
Nashville (5d/4n)	\$1,569
New Orleans (5d/4n)	\$1,549

#### PARENT DELUXE CATEGORY: ATLANTIS COVE TOWER

*Parent Package prices are based on: 5 days/4 nights and double occupancy (2 per room, with either 1 king or 2 doubles) unless noted otherwise.*

*Prices do not include: Departure Tax (\$175), Hotel Incidentals or Hotel Occupancy Fees (for less than 2). Single Occ. + \$1,610 (Triple Occ. Discount \$140 p.p.).*

Little Rock (5d/4n)	\$2,379
Memphis (5d/4n)	\$2,379
Nashville (5d/4n)	\$2,379
New Orleans (5d/4n)	\$2,339

THE OFFICIAL STUDENT TRAVEL COMPANY PRESENTS



THE BEST WEEK OF YOUR LIFE!

Class of 2024  
Fall Edition

# WHAT'S INCLUDED?

## TRIP PACKAGES INCLUDE:

- Roundtrip Airfare
- Hotel Accommodations (up to 5 nights)
- On-site Airport/Hotel Transfers
- GradWeek Wristband (good for exclusive discounts at restaurants and tours)
- On-site Welcome Orientation
- Hotel Taxes, Bellman and Maid Gratuities
- 24-Hour Adult Destination Staff (not chaperones)
- Travel Protection Insurance (for coverage details and restrictions please review the insurance flyer)
- Online Payments, 24/7 Account and Trip Status

*Note: Hotel occupancy fees are listed per person (p.p.).*

## BONUS INCLUSIONS

- ⚙ Pearl Harbor/Swap Meet Transportation
- ⚙ Club Pass (up to 3 club nights)
- ⚙ Catamaran Cruise
- ⚙ GradWeek Dinner

## CONTACT US!

Phone: (800) 448-4444

Website: [www.gradweek.com](http://www.gradweek.com)



### DELUXE HOTEL CATEGORY: THE TWIN FIN OR QUEEN KAPIOLANI

*Student Package prices are based on: 6 days/5 nights and quadruple occupancy (4 per room, 2 per bed) unless noted otherwise.*

*Prices do not include: Departure Tax (\$65), Hotel Incidentals or Hotel Occupancy Fees (for less than 4), Triple Occ. + \$130 p.p., Double Occ. + \$390 p.p., and Single Occ. + \$950.*

Atlanta	\$2,179
Chicago	\$1,979
Dallas	\$1,979
Denver	\$1,979
Houston	\$1,979
Las Vegas	\$1,679
Los Angeles	\$1,629
Memphis	\$2,199
Nashville	\$2,199
New Orleans	\$2,099
Phoenix	\$1,679
Portland	\$1,679
Sacramento	\$1,709
San Diego	\$1,669
San Fran./Oakland/San Jose	\$1,629
Seattle	\$1,679



# HAWAII

#GRADWEEK  
2024



### PARENT DELUXE HOTEL CATEGORY: ALOHILANI RESORT WAIKIKI

*Parent Package prices are based on: 6 days/5 nights and double occupancy (2 per room, with either 1 king or 2 doubles) unless noted otherwise.*

*Prices do not include: Departure Tax (\$65), Hotel Incidentals or Hotel Occupancy Fees (for less than 2), Single Occ. + \$850 (Triple Occ. Discount \$150 p.p.).*

Atlanta	\$2,499
Chicago	\$2,279
Dallas	\$2,279
Denver	\$2,279
Houston	\$2,279
Las Vegas	\$2,099
Los Angeles	\$2,099
Memphis	\$2,499
Nashville	\$2,499
New Orleans	\$2,399
Phoenix	\$2,099
Portland	\$2,099
Sacramento	\$2,099
San Diego	\$2,099
San Fran./Oakland/San Jose	\$2,099
Seattle	\$2,099



# GRADWEEK

THE BEST WEEK OF YOUR LIFE!

**Class of 2024  
Fall Edition**

## WHAT'S INCLUDED?

### TRIP PACKAGES

#### INCLUDE:

- Roundtrip Airfare
- Hotel Accommodations (up to 4 nights)
- On-site Airport/Hotel Transfers
- GradWeek Wristband (good for exclusive discounts at restaurants and tours)
- On-site Welcome Orientation
- Hotel Taxes, Bellman and Maid Gratuities
- 24-Hour Adult Destination Staff (not chaperones)
- Travel Protection Insurance (for coverage details and restrictions please review the insurance flyer)
- Online Payments, 24/7 Account and Trip Status

*Note: Hotel occupancy fees are listed per person (p.p.).*

### BONUS INCLUSIONS

- ⚙️ Snorkel Adventure Day

### CONTACT US!

Phone: (800) 448-4444

Website: [www.gradweek.com](http://www.gradweek.com)



#### ALL-INCLUSIVE CATEGORY: PUEBLO BONITO ROSE

*Student Package prices are based on: 5 days/4 nights and triple occupancy (3 per room, sharing beds) unless noted otherwise.*

*Prices do not include: Departure Tax (\$165), Hotel Incidentals or Hotel Occupancy Fees (for less than 3). Double Occ. + \$50 p.p. and Single Occ. + \$600.*

Boston	\$1,739
Chicago	\$1,659
Denver	\$1,599
Little Rock	\$1,579
Los Angeles	\$1,419
Memphis	\$1,579
Nashville	\$1,579
New Orleans	\$1,579
New York City	\$1,579
Reno	\$1,699
Sacramento	\$1,699
San Diego	\$1,419
San Fran./Oakland/San Jose	\$1,579

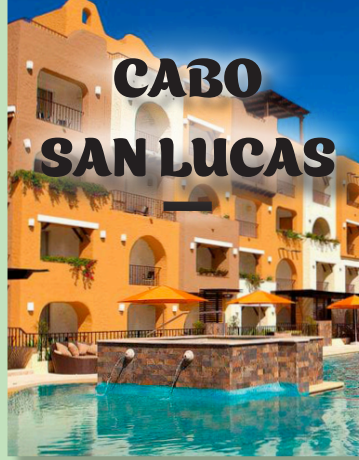


#### PARENT ALL-INCLUSIVE CATEGORY: PUEBLO BONITO ROSE

*Parent Package prices are based on: 5 days/4 nights, 1 bedroom and double occupancy (2 per room, with either 1 king or 2 doubles) unless noted otherwise.*

*Prices do not include: Departure Tax (\$165), Hotel Incidentals or Hotel Occupancy Fees (for less than 2). Single Occ. + \$500 (Triple Occ. Discount \$70 p.p.).*

Boston	\$1,909
Chicago	\$1,829
Denver	\$1,769
Little Rock	\$1,749
Los Angeles	\$1,589
Memphis	\$1,749
Nashville	\$1,749
New Orleans	\$1,749
New York City	\$1,749
Reno	\$1,869
Sacramento	\$1,869
San Diego	\$1,589
San Fran./Oakland/San Jose	\$1,729

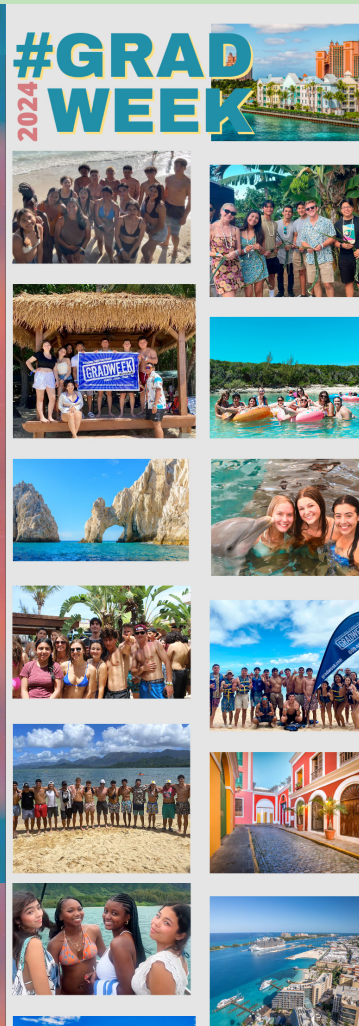


#### ALL-INCLUSIVE CATEGORY: TESORO LOS CABOS

*Student Package prices are based on: 5 days/4 nights and triple occupancy (3 per room, sharing beds) unless noted otherwise.*

*Prices do not include: Departure Tax (\$165), Hotel Incidentals or Hotel Occupancy Fees (for less than 3). Double Occ. + \$50 p.p. and Single Occ. + \$300.*

Boston	\$1,639
Chicago	\$1,559
Denver	\$1,499
Little Rock	\$1,479
Los Angeles	\$1,319
Memphis	\$1,479
Nashville	\$1,479
New Orleans	\$1,479
New York City	\$1,479
Reno	\$1,599
Sacramento	\$1,599
San Diego	\$1,319
San Fran./Oakland/San Jose	\$1,499



#### ALL-INCLUSIVE CATEGORY: PUEBLO BONITO LOS CABOS

*Student Package prices are based on: 5 days/4 nights and triple occupancy (3 per room, sharing beds) unless noted otherwise.*

*Prices do not include: Departure Tax (\$165), Hotel Incidentals or Hotel Occupancy Fees (for less than 3). Double Occ. + \$50 p.p. and Single Occ. + \$630.*

Boston	\$1,759
Chicago	\$1,679
Denver	\$1,619
Little Rock	\$1,599
Los Angeles	\$1,439
Memphis	\$1,599
Nashville	\$1,599
New Orleans	\$1,599
New York City	\$1,599
Reno	\$1,719
Sacramento	\$1,719
San Diego	\$1,439
San Fran./Oakland/San Jose	\$1,599



#### PARENT ALL-INCLUSIVE CATEGORY: PUEBLO BONITO LOS CABOS

*Parent Package prices are based on: 5 days/4 nights, 1 bedroom and double occupancy (2 per room, with either 1 king or 2 doubles) unless noted otherwise.*

*Prices do not include: Departure Tax (\$165), Hotel Incidentals or Hotel Occupancy Fees (for less than 2). Single Occ. + \$700 (Triple Occ. Discount \$90 p.p.).*

Boston	\$1,959
Chicago	\$1,879
Denver	\$1,819
Little Rock	\$1,799
Los Angeles	\$1,639
Memphis	\$1,799
Nashville	\$1,799
New Orleans	\$1,799
New York City	\$1,799
Reno	\$1,919
Sacramento	\$1,919
San Diego	\$1,639
San Fran./Oakland/San Jose	\$1,779

# GRADWEEK®

THE BEST WEEK OF YOUR LIFE!

*Class of 2024  
Fall Edition*

## WHAT'S INCLUDED?

### TRIP PACKAGES INCLUDE:

- Roundtrip Airfare
- Hotel Accommodations (up to 5 nights)
- On-site Airport/Hotel Transfers
- GradWeek Wristband (good for exclusive discounts at restaurants and tours)
- On-site Welcome Orientation
- Hotel Taxes, Bellman and Maid Gratuities
- 24-Hour Adult Destination Staff (not chaperones)
- Travel Protection Insurance (for coverage details and restrictions please review the insurance flyer)
- Online Payments, 24/7 Account and Trip Status

*Note: Hotel occupancy fees are listed per person (p.p.).*

### BONUS INCLUSIONS

- ⚙ El Yunque Rain Forest Day Tour
- ⚙ Old San Juan Tour
- ⚙ Vivo Beach Club

### CONTACT US!

Phone: (800) 448-4444

Website: [www.gradweek.com](http://www.gradweek.com)

# PUERTO RICO

## DELUXE HOTEL CATEGORY: THE CONDADO PLAZA HOTEL

*Student Package prices are based on: 6 days/5 nights and quadruple occupancy (4 per room, 2 per bed) unless noted otherwise.*

*Prices do not include: Departure Tax (\$65), Hotel Incidentals or Hotel Occupancy Fees (for less than 4). Triple Occ. + \$130 p.p., Double Occ. + \$280 p.p., and Single Occ. + \$1,000.*

Atlanta	\$1,529
Boston	\$1,579
Charlotte/Raleigh	\$1,579
Chicago	\$1,599
Denver	\$1,599
Little Rock	\$1,529
Los Angeles	\$1,629
Memphis	\$1,529
Miami	\$1,479
Nashville	\$1,529
New Orleans	\$1,529
New York City	\$1,529
Philadelphia	\$1,529
Phoenix	\$1,649
Sacramento	\$1,699
San Diego	\$1,649
San Fran./Oakland/San Jose	\$1,649
Seattle	\$1,649

#GRADWEEK  
2024



